



# Duval County Voter Registration Report

## January 2026

Created on: January 18, 2026

Created by: Dan Heim

### Executive Summary

This report has been generated automatically using the data provided by the Florida Secretary of State's office from December 10, 2025 to January 13, 2026.

### Special Projects

This section contains unique information for special projects. It will vary from month to month as topics of interest change.

### Elections

Secretary of State records contain no election data from the last 60 days.

### Details

#### Total Number of Voters

As of this writing there are **714,463** total registered voters in Duval County.

#### Electorate Changes

##### Voter Numbers

There are **2,981** new voters this month in Duval County. During this same time, **1,663** voters have been removed from the county's registrations.

##### New Registrations

The table below presents the number of new voter registrations by party since the previous report.

Party	Total New Registrations
REP	301
DEM	294
NPA	223
AMF	35
IND	26
CPP	10
BPP	9
LPF	8
PSL	1
GRE	1

Party	Total New Registrations
ECO	1
CSV	1
ASP	1

TABLE 1 - NEW REGISTRATIONS

### Pre-Registration

Florida allows a person who is otherwise qualified to preregister on or after that person's 16th birthday and may vote in any election occurring on or after that person's 18th birthday. See FS 97.041 5(b) for details.

There are **140** pre-registered (underage) voters in the county's registrations for this month.

Party	Total Pre-Registrations
AMF	2
ASP	3
CSV	2
DEM	40
GRE	1
IND	1
NPA	48
REP	43
<b>Grand Total</b>	<b>140</b>

TABLE 2 -PRE-REGISTRATIONS (UNDERAGE)

The full name for each party can be found in in the appendix.

### Registered Seniors

As of this writing there are **573** voters 100 years old or older in Duval County.

Age	Total Seniors
100	133
101	95
102	84
103	59
104	44
105	30
106	28
107	18
108	12
109	14
110	11
111	12
112	14
113	6
114	3
115	4
116	2
117	4

TABLE 3 - DUVAL SENIORS (100+)

## Voter Migration

Voters move for a variety of reasons. This month Duval County experienced **7,496** voters that had their address changed within the system.

**1,663** voters have either moved out or have been removed for Duval County while **2,981** have moved in. The remainder, **2,852** had a change in either their residential or mailing address which may warrant an inquiry to your Supervisor of Elections to learn more.

## Voter Status Changes

### Voter Activity

A voter changes their status because of “Voter activity” or “Voter inactivity”.

“Active voter” refers to a registered voter whose registration status is active.

“Inactive voter” refers to a registered voter whose registration record has been placed on inactive status after procedures in section 98.065(4)(c), F.S., and Rule 1S-2.041 were followed.

Per Rule 1S-2.041(3)(e) a voter placed on inactive status cannot become active when a third-party address change has been received. An inactive voter can only be restored to active status upon the voter’s own activity as set forth in section 98.065(4)(c), F.S.

**Removal from the rolls.** If an inactive voter does not sign a petition, vote, request a vote-by-mail ballot or update his or her voter registration record by the second federal general election after the date he or she was placed on inactive status, the Supervisor shall remove the name of the inactive voter from the FVRS no later than December 31 in the same year of the second federal general election. Except as provided in subsection (5), no address list maintenance notices can be issued and a voter’s name cannot be removed during the 90-day period immediately preceding an election for federal office.

**341** voters had their status changed from INACTIVE to ACTIVE.

**1109** voters had their status changed from ACTIVE to INACTIVE.

### Party Affiliation

Voters change parties for a variety of reasons. The following table captures the number of voters who changed their party affiliation and to which party they moved to this month.

Previous Party	New Party	Total
AMF	CPP	1
AMF	NPA	1
ASP	NPA	1
BPP	DEM	1
BPP	NPA	2
BPP	REP	1
CPF	AMF	2
CPF	DEM	2
CPF	GRE	1
CPF	NPA	2
CPF	REP	1
CPP	BPP	1

Previous Party	New Party	Total
CSV	AMF	2
CSV	DEM	4
CSV	NPA	1
CSV	REP	5
DEM	AMF	15
DEM	ASP	2
DEM	BPP	2
DEM	CPF	1
DEM	CPP	7
DEM	IND	17
DEM	LPF	1
DEM	NPA	121
DEM	REP	83
ECO	DEM	1
GRE	AMF	1
GRE	DEM	1
GRE	IND	1
GRE	NPA	1
GRE	REP	1
IND	ASP	1
IND	BPP	1
IND	CPF	1
IND	CPP	1
IND	DEM	11
IND	FFP	1
IND	NPA	23
IND	REP	12
LPF	AMF	1
LPF	DEM	1
LPF	GRE	1
LPF	IND	1
LPF	REP	1
NPA	AMF	23
NPA	ASP	1
NPA	BPP	5
NPA	CPP	10
NPA	CSV	4
NPA	DEM	136
NPA	GRE	1
NPA	IND	39
NPA	LPF	3
NPA	REP	141
PSL	AMF	1
REP	AMF	4
REP	ASP	1
REP	BPP	3
REP	CPP	2
REP	CSV	4

Previous Party	New Party	Total
REP	DEM	60
REP	IND	15
REP	LPF	2
REP	NPA	79

TABLE 4 - CHANGES IN PARTY

The full name for each party can be found in the appendix.

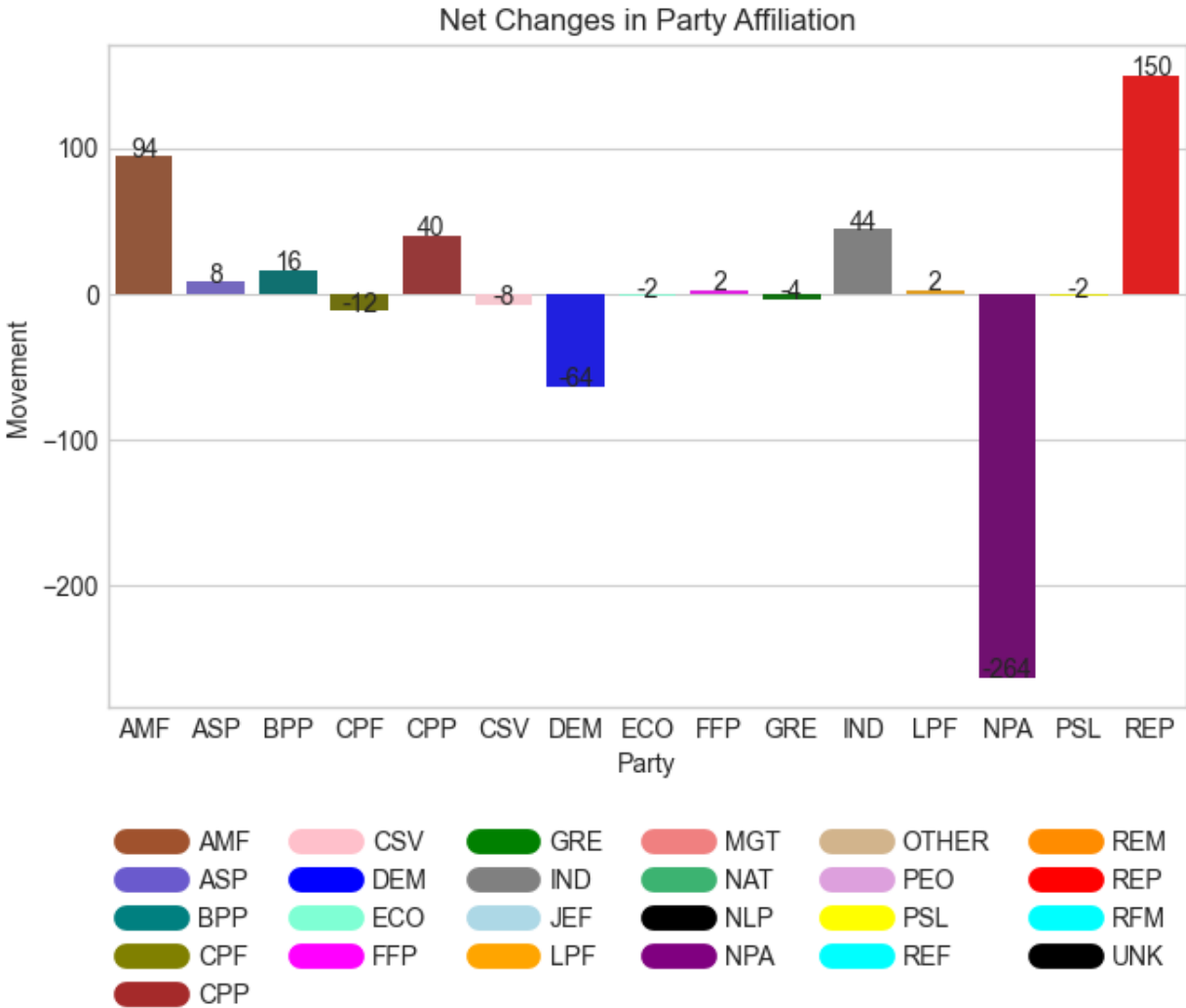


FIGURE 1 - PARTY MOVEMENT

# Anomalies

This section reports on anomalies found in the voter registrations.

## Elector That Appears to Have Voted in an Election Before Being Registered

This query looks for voters who show having voted prior to their date of registration.

This situation should only occur when a voter for some reason becomes ineligible and subsequently gets re-registered. When a voter re-registers they get a new voter ID yet their old voting history stays intact. This then shows up as voting prematurely.

Another possibility is a data entry error or a bug in the election management software.

There were **6** voters where this happened, and this is how they casted their votes:

Voter ID	Registration Date	Election Date	Vote Cast
100919888	2024-08-09	2016-11-08	Voted Absentee
100919888	2024-08-09	2020-11-03	Voted Absentee
103538183	2022-09-27	2016-11-08	Voted Early
114742070	2020-06-03	2016-11-08	Voted
115149028	2024-09-18	2016-11-08	Voted Early
118829554	2020-01-29	2016-11-08	Voted
120015179	2020-09-01	2016-11-08	Voted Early

TABLE 5 VOTERS THAT HAVE CAST AT LEAST ONE VOTE PRIOR TO THEIR REGISTRATION DATE

## Voters with a Change in Registration

The rationale for these changes remains uncertain.

Voter ID	Previous Registration Date	New Registration Date
None	-	-

TABLE 6 VOTERS WHO HAD THEIR REGISTRATION DATES CHANGED

## Voters Who Had Their Birth Date Changed

The rationale for these changes remains uncertain.

Voter ID	Previous Birth Date	New Birth Date
133736780	1990-08-18	1990-08-19
103846230	1950-07-30	1951-07-30
124914602	1983-12-12	1983-12-24
130580952	1998-02-24	1998-02-15

TABLE 7 VOTERS WHO HAD THEIR BIRTH DATE CHANGED

## Appendix – Florida Party Affiliations

Party	Full Name
AMF	America First
ASP	American Solidarity Party of Florida
BPP	Boricua Party
CPF	Constitution Party of Florida
CPP	Coalition With A Purpose Party
CSV	Conservative Party of Florida
DEM	Florida Democratic Party
ECO	Ecology Party of Florida
FFP	Florida Forward Party
GRE	Green Party of Florida
IND	Independent Party of Florida
JEF	Jeffersonian Party of Florida
LPF	Libertarian Party of Florida
MTG	MGTOU (Men Going Their Own Way)
NAT	Florida Natural Law Party (Disbanded)
NLP	No Labels Party of Florida (Disbanded)
NPA	No Party Affiliation
PEO	People's Party (Disbanded)
PSL	Party for Socialism and Liberation - Florida
REM	Reform Party
REP	Republican Party of Florida