



# Clay County Voter Registration Report

## January 2026

Created on: January 18, 2026

Created by: Dan Heim

### Executive Summary

This report has been generated automatically using the data provided by the Florida Secretary of State's office from December 10, 2025 to January 13, 2026.

### Special Projects

This section contains unique information for special projects. It will vary from month to month as topics of interest change.

### Elections

Secretary of State records contain no election data from the last 60 days.

### Details

#### Total Number of Voters

As of this writing there are **183,112** total registered voters in Clay County.

#### Electorate Changes

##### Voter Numbers

There are **919** new voters this month in Clay County. During this same time, **548** voters have been removed from the county's registrations.

##### New Registrations

The table below presents the number of new voter registrations by party since the previous report.

| Party | Total New Registrations |
|-------|-------------------------|
| REP   | 114                     |
| DEM   | 57                      |
| NPA   | 52                      |
| IND   | 10                      |
| LPF   | 4                       |
| BPP   | 4                       |
| CPP   | 2                       |
| AMF   | 2                       |
| PSL   | 1                       |
| CSV   | 1                       |

**TABLE 1 - NEW REGISTRATIONS**

### Pre-Registration

Florida allows a person who is otherwise qualified to preregister on or after that person's 16th birthday and may vote in any election occurring on or after that person's 18th birthday. See FS 97.041 5(b) for details.

There are **46** pre-registered (underage) voters in the county's registrations for this month.

| Party              | Total Pre-Registrations |
|--------------------|-------------------------|
| CSV                | 2                       |
| DEM                | 10                      |
| IND                | 2                       |
| NPA                | 9                       |
| REP                | 23                      |
| <b>Grand Total</b> | <b>46</b>               |

**TABLE 2 -PRE-REGISTRATIONS (UNDERAGE)**

The full name for each party can be found in the appendix.

### Registered Seniors

As of this writing there are **92** voters 100 years old or older in Clay County.

| Age | Total Seniors |
|-----|---------------|
| 100 | 28            |
| 101 | 21            |
| 102 | 8             |
| 103 | 7             |
| 104 | 8             |
| 105 | 7             |
| 106 | 3             |
| 107 | 3             |
| 108 | 1             |
| 109 | 1             |
| 111 | 3             |
| 113 | 2             |

**TABLE 3 - CLAY SENIORS (100+)**

### Voter Migration

Voters move for a variety of reasons. This month Clay County experienced **1,930** voters that had their address changed within the system.

**548** voters have either moved out or have been removed for Clay County while **919** have moved in. The remainder, **463** had a change in either their residential or mailing address which may warrant an inquiry to your Supervisor of Elections to learn more.

### Voter Status Changes

#### Voter Activity

A voter changes their status because of "Voter activity" or "Voter inactivity".

"Active voter" refers to a registered voter whose registration status is active.

“Inactive voter” refers to a registered voter whose registration record has been placed on inactive status after procedures in section 98.065(4)(c), F.S., and Rule 1S-2.041 were followed.

Per Rule 1S-2.041(3)(e) a voter placed on inactive status cannot become active when a third-party address change has been received. An inactive voter can only be restored to active status upon the voter’s own activity as set forth in section 98.065(4)(c), F.S.

**Removal from the rolls.** If an inactive voter does not sign a petition, vote, request a vote-by-mail ballot or update his or her voter registration record by the second federal general election after the date he or she was placed on inactive status, the Supervisor shall remove the name of the inactive voter from the FVRS no later than December 31 in the same year of the second federal general election. Except as provided in subsection (5), no address list maintenance notices can be issued and a voter’s name cannot be removed during the 90-day period immediately preceding an election for federal office.

**139** voters had their status changed from INACTIVE to ACTIVE.

**116** voters had their status changed from ACTIVE to INACTIVE.

## Party Affiliation

Voters change parties for a variety of reasons. The following table captures the number of voters who changed their party affiliation and to which party they moved to this month.

| Previous Party | New Party | Total |
|----------------|-----------|-------|
| AMF            | FFP       | 1     |
| AMF            | REP       | 1     |
| ASP            | DEM       | 1     |
| CPF            | AMF       | 1     |
| CPF            | IND       | 1     |
| CPF            | NPA       | 1     |
| DEM            | AMF       | 3     |
| DEM            | CPP       | 2     |
| DEM            | GRE       | 1     |
| DEM            | IND       | 7     |
| DEM            | NPA       | 26    |
| DEM            | REP       | 30    |
| GRE            | NPA       | 1     |
| IND            | AMF       | 3     |
| IND            | BPP       | 1     |
| IND            | CPP       | 1     |
| IND            | DEM       | 3     |
| IND            | NPA       | 5     |
| IND            | REP       | 4     |
| LPF            | REP       | 2     |
| NPA            | AMF       | 8     |
| NPA            | BPP       | 3     |
| NPA            | DEM       | 25    |
| NPA            | ECO       | 1     |
| NPA            | FFP       | 1     |
| NPA            | IND       | 18    |

| Previous Party | New Party | Total |
|----------------|-----------|-------|
| NPA            | LPF       | 1     |
| NPA            | REP       | 59    |
| REP            | AMF       | 2     |
| REP            | ASP       | 1     |
| REP            | CPF       | 1     |
| REP            | CSV       | 3     |
| REP            | DEM       | 30    |
| REP            | ECO       | 1     |
| REP            | IND       | 5     |
| REP            | NPA       | 39    |

TABLE 4 - CHANGES IN PARTY

The full name for each party can be found in the appendix.

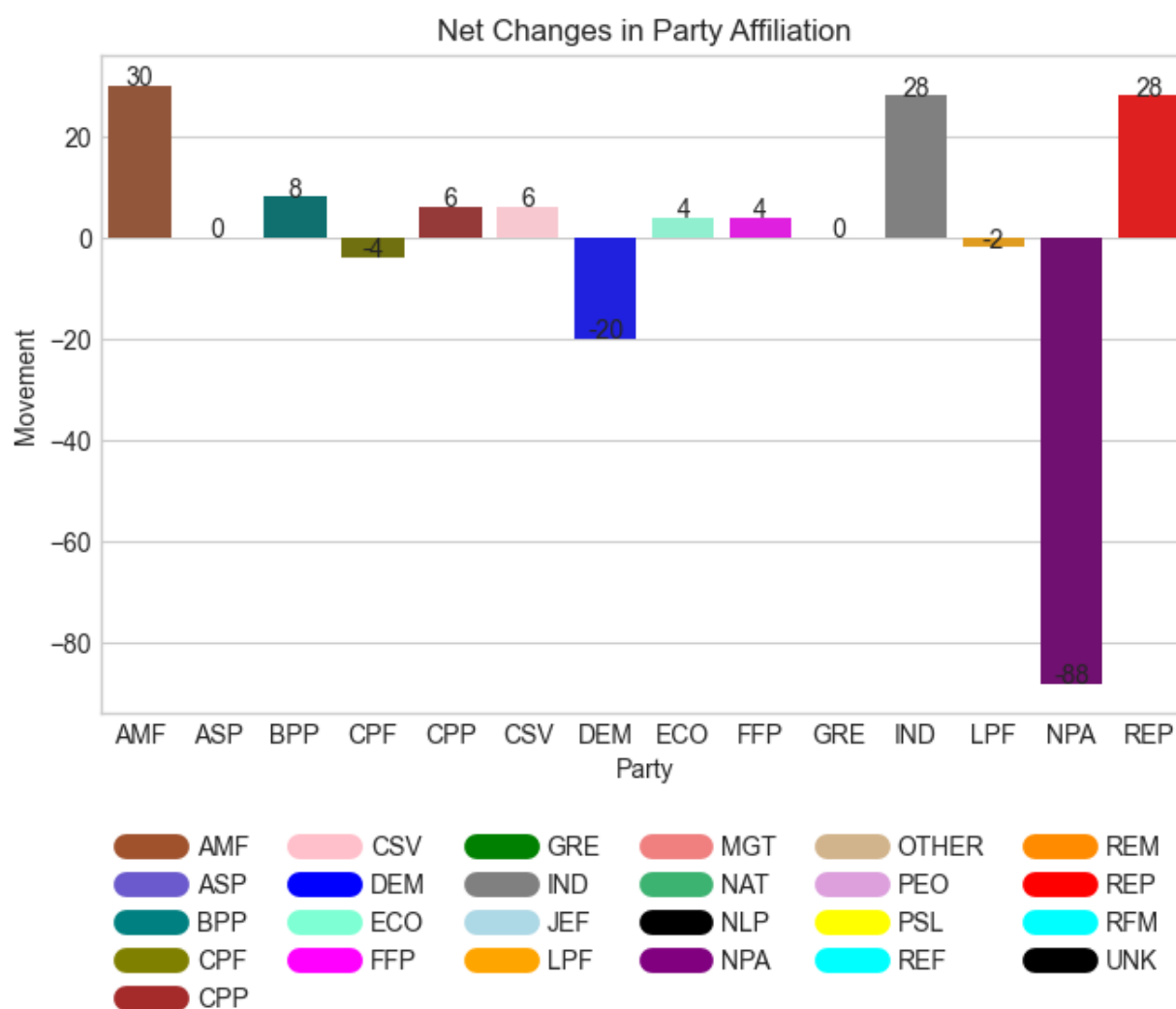


FIGURE 1 - PARTY MOVEMENT

## Anomalies

This section reports on anomalies found in the voter registrations.

## Elector That Appears to Have Voted in an Election Before Being Registered

This query looks for voters who show having voted prior to their date of registration.

This situation should only occur when a voter for some reason becomes ineligible and subsequently gets re-registered. When a voter re-registers they get a new voter ID yet their old voting history stays intact. This then shows up as voting prematurely.

Another possibility is a data entry error or a bug in the election management software.

There were **no** voters where this happened, and this is how they casted their votes:

| Voter ID | Registration Date | Election Date | Vote Cast |
|----------|-------------------|---------------|-----------|
| None     | -                 | -             | -         |

TABLE 5 VOTERS THAT HAVE CAST AT LEAST ONE VOTE PRIOR TO THEIR REGISTRATION DATE

## Voters with a Change in Registration

The rationale for these changes remains uncertain.

| Voter ID  | Previous Registration Date | New Registration Date |
|-----------|----------------------------|-----------------------|
| 120978553 | 2013-06-25                 | 2025-12-15            |

TABLE 6 VOTERS WHO HAD THEIR REGISTRATION DATES CHANGED

## Voters Who Had Their Birth Date Changed

The rationale for these changes remains uncertain.

| Voter ID  | Previous Birth Date | New Birth Date |
|-----------|---------------------|----------------|
| 120027127 | 1950-08-04          | 1950-08-07     |

TABLE 7 VOTERS WHO HAD THEIR BIRTH DATE CHANGED

## Appendix – Florida Party Affiliations

| Party | Full Name                                    |
|-------|--|
| AMF   | America First                                |
| ASP   | American Solidarity Party of Florida         |
| BPP   | Boricua Party                                |
| CPF   | Constitution Party of Florida                |
| CPP   | Coalition With A Purpose Party               |
| CSV   | Conservative Party of Florida                |
| DEM   | Florida Democratic Party                     |
| ECO   | Ecology Party of Florida                     |
| FFP   | Florida Forward Party                        |
| GRE   | Green Party of Florida                       |
| IND   | Independent Party of Florida                 |
| JEF   | Jeffersonian Party of Florida                |
| LPF   | Libertarian Party of Florida                 |
| MTG   | MGTOU (Men Going Their Own Way)              |
| NAT   | Florida Natural Law Party (Disbanded)        |
| NLP   | No Labels Party of Florida (Disbanded)       |
| NPA   | No Party Affiliation                         |
| PEO   | People's Party (Disbanded)                   |
| PSL   | Party for Socialism and Liberation - Florida |
| REM   | Reform Party                                 |
| REP   | Republican Party of Florida                  |