



Pasco County Voter Registration Report

November 2025

Created on: November 27, 2025

Created by: Dan Heim

Executive Summary

This report has been generated automatically using the data provided by the Florida Secretary of State's office from October 14, 2025 to November 12, 2025.

Special Projects

This section contains unique information for special projects. It will vary from month to month as topics of interest change.

Elections

Secretary of State records contain no election data from the last 60 days.

Details

Total Number of Voters

As of this writing there are **466,253** total registered voters in Pasco County.

Electorate Changes

Voter Numbers

There are **2,455** new voters this month in Pasco County. During this same time, **1,375** voters have been removed from the county's registrations.

New Registrations

The table below presents the number of new voter registrations by party since the previous report.

Party	Total New Registrations
REP	343
DEM	169
NPA	148
IND	27
AMF	19
CPP	6
BPP	5
LPF	4
CSV	3
PSL	2

Party	Total New Registrations
CPF	2
GRE	1
FFP	1
ASP	1

TABLE 1 - NEW REGISTRATIONS

Pre-Registration

Florida allows a person who is otherwise qualified to preregister on or after that person's 16th birthday and may vote in any election occurring on or after that person's 18th birthday. See FS 97.041 5(b) for details.

There are **3,186** pre-registered (underage) voters in the county's registrations for this month.

Party	Total Pre-Registrations
AMF	15
ASP	14
BPP	22
CPF	25
CPP	7
CSV	70
DEM	741
ECO	2
FFP	2
GRE	13
IND	151
LPF	8
NPA	867
PSL	6
REP	1243
Grand Total	3186

TABLE 2 -PRE-REGISTRATIONS (UNDERAGE)

The full name for each party can be found in the appendix.

Registered Seniors

As of this writing there are **279** voters 100 years old or older in Pasco County.

Age	Total Seniors
100	87
101	49
102	41
103	34
104	23
105	13
106	7
107	6
108	6
109	7
110	1
111	1
113	1

Age	Total Seniors
114	1
115	2

TABLE 3 - PASCO SENIORS (100+)

Voter Migration

Voters move for a variety of reasons. This month Pasco County experienced **6,633** voters that had their address changed within the system.

1,375 voters have either moved out or have been removed for Pasco County while **2,455** have moved in. The remainder, **2,803** had a change in either their residential or mailing address which may warrant an inquiry to your Supervisor of Elections to learn more.

Voter Status Changes

Voter Activity

A voter changes their status because of “Voter activity” or “Voter inactivity”.

“Active voter” refers to a registered voter whose registration status is active.

“Inactive voter” refers to a registered voter whose registration record has been placed on inactive status after procedures in section 98.065(4)(c), F.S., and Rule 1S-2.041 were followed.

Per Rule 1S-2.041(3)(e) a voter placed on inactive status cannot become active when a third-party address change has been received. An inactive voter can only be restored to active status upon the voter’s own activity as set forth in section 98.065(4)(c), F.S.

Removal from the rolls. If an inactive voter does not sign a petition, vote, request a vote-by-mail ballot or update his or her voter registration record by the second federal general election after the date he or she was placed on inactive status, the Supervisor shall remove the name of the inactive voter from the FVRS no later than December 31 in the same year of the second federal general election. Except as provided in subsection (5), no address list maintenance notices can be issued and a voter’s name cannot be removed during the 90-day period immediately preceding an election for federal office.

294 voters had their status changed from INACTIVE to ACTIVE.

11 voters had their status changed from ACTIVE to INACTIVE.

Party Affiliation

Voters change parties for a variety of reasons. The following table captures the number of voters who changed their party affiliation and to which party they moved to this month.

Previous Party	New Party	Total
AMF	DEM	1
AMF	IND	1
ASP	AMF	1
ASP	REP	1
BPP	AMF	1
BPP	DEM	2
BPP	NPA	2

Previous Party	New Party	Total
CPF	LPF	1
CPF	NPA	1
CPF	REP	4
CPP	NPA	2
CSV	ASP	1
CSV	DEM	1
CSV	NPA	5
CSV	REP	1
DEM	AMF	5
DEM	CPF	1
DEM	CPP	2
DEM	GRE	1
DEM	IND	47
DEM	LPF	1
DEM	NPA	156
DEM	PSL	3
DEM	REP	142
FFP	NPA	1
IND	AMF	3
IND	BPP	1
IND	CPP	1
IND	DEM	12
IND	FFP	1
IND	NPA	25
IND	REP	15
LPF	IND	1
LPF	REP	2
NPA	AMF	13
NPA	BPP	4
NPA	CPF	1
NPA	CPP	4
NPA	CSV	4
NPA	DEM	118
NPA	ECO	1
NPA	GRE	1
NPA	IND	51
NPA	LPF	2
NPA	PSL	1
NPA	REP	159
PSL	DEM	1
REP	AMF	4
REP	ASP	1
REP	CPP	2
REP	DEM	30
REP	IND	29
REP	LPF	1
REP	NPA	92
REP	RFM	1

TABLE 4 - CHANGES IN PARTY

The full name for each party can be found in the appendix.

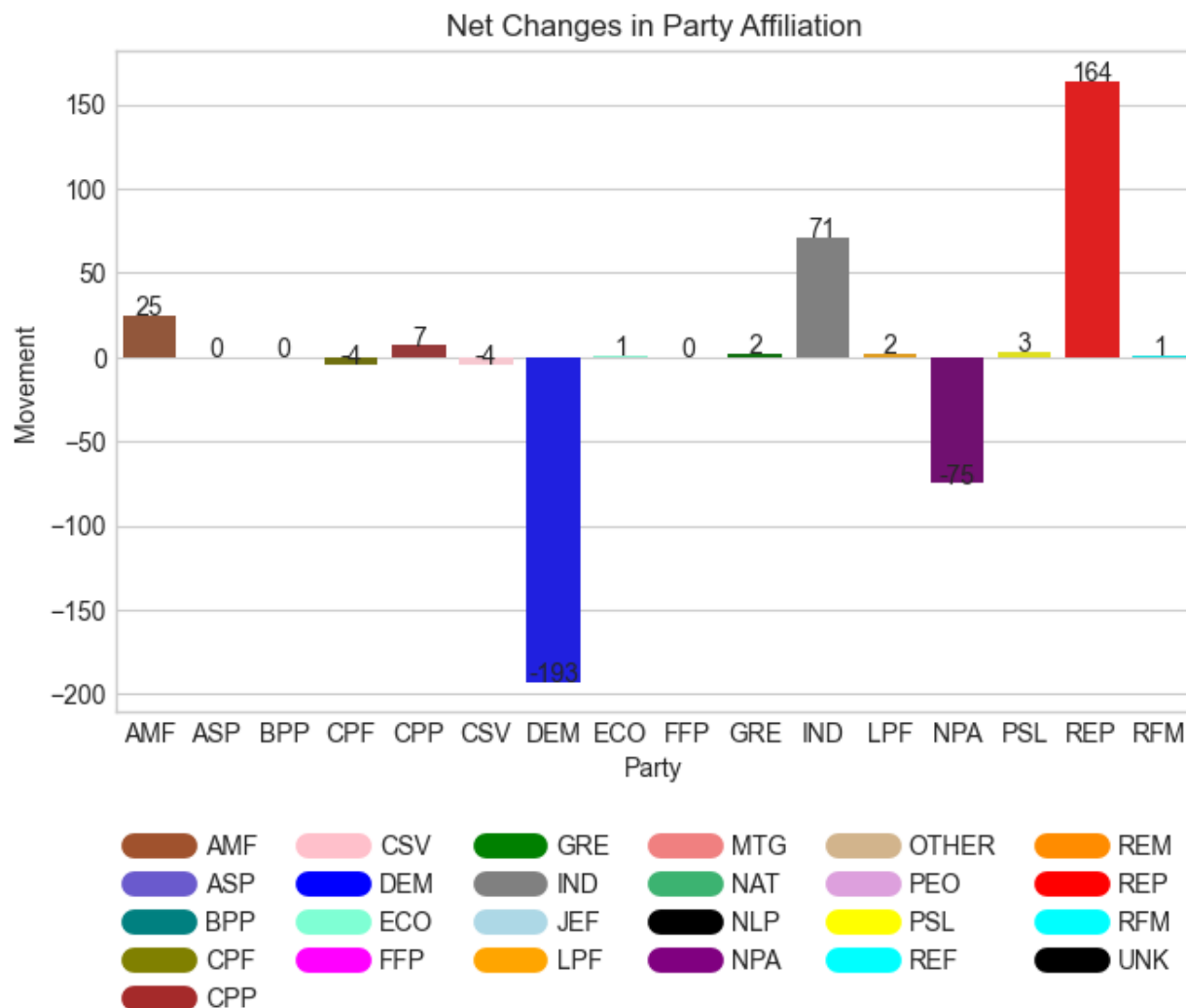


FIGURE 1 - PARTY MOVEMENT

Anomalies

This section reports on anomalies found in the voter registrations.

Elector That Appears to Have Voted in an Election Before Being Registered

This query looks for voters who show having voted prior to their date of registration.

This situation should only occur when a voter for some reason becomes ineligible and subsequently gets re-registered. When a voter re-registers they get a new voter ID yet their old voting history stays intact. This then shows up as voting prematurely.

Another possibility is a data entry error or a bug in the election management software.

There were **no** voters where this happened, and this is how they casted their votes:

Voter ID	Registration Date	Election Date	Vote Cast
None	-	-	-

TABLE 5 VOTERS THAT HAVE CAST AT LEAST ONE VOTE PRIOR TO THEIR REGISTRATION DATE

Voters with a Change in Registration

The rationale for these changes remains uncertain.

Voter ID	Previous Registration Date	New Registration Date
107263747	2022-10-11	2002-05-07
120018444	2022-06-30	2012-08-11
102784600	2022-04-05	2004-07-08
126435553	2018-11-01	2018-10-09
102784599	2022-04-05	2004-07-28
106748812	2019-08-06	1974-01-30

TABLE 6 VOTERS WHO HAD THEIR REGISTRATION DATES CHANGED

Voters Who Had Their Birth Date Changed

The rationale for these changes remains uncertain.

Voter ID	Previous Birth Date	New Birth Date
133946375	1980-09-13	1980-07-13
106499806	1935-03-26	1934-03-26
133650849	1973-07-17	1973-07-18
124363577	1968-12-11	1968-12-17
107209530	1944-06-18	1943-06-18
132542334	1957-05-29	1957-05-22
118719150	1963-05-07	1963-05-01

TABLE 7 VOTERS WHO HAD THEIR BIRTH DATE CHANGED

Appendix – Florida Party Affiliations

Party	Full Name
AMF	America First
ASP	American Solidarity Party of Florida
BPP	Boricua Party
CPF	Constitution Party of Florida
CPP	Coalition With A Purpose Party
CSV	Conservative Party of Florida
DEM	Florida Democratic Party
ECO	Ecology Party of Florida
FFP	Florida Forward Party
GRE	Green Party of Florida
IND	Independent Party of Florida
JEF	Jeffersonian Party of Florida
LPF	Libertarian Party of Florida
MTG	MGTOU (Men Going Their Own Way)
NAT	Florida Natural Law Party (Disbanded)
NLP	No Labels Party of Florida (Disbanded)
NPA	No Party Affiliation
PEO	People's Party (Disbanded)
PSL	Party for Socialism and Liberation - Florida
REM	Reform Party
REP	Republican Party of Florida