



# Miami-Dade County Voter Registration Report

## November 2025

**Created on: November 27, 2025**

**Created by: Dan Heim**

### Executive Summary

This report has been generated automatically using the data provided by the Florida Secretary of State's office from October 14, 2025 to November 12, 2025.

### Special Projects

This section contains unique information for special projects. It will vary from month to month as topics of interest change.

### Elections

Secretary of State records contain no election data from the last 60 days.

### Details

#### Total Number of Voters

As of this writing there are **1,638,446** total registered voters in Miami-Dade County.

#### Electorate Changes

##### Voter Numbers

There are **5,667** new voters this month in Miami-Dade County. During this same time, **3,474** voters have been removed from the county's registrations.

##### New Registrations

The table below presents the number of new voter registrations by party since the previous report.

Party	Total New Registrations
NPA	824
REP	793
DEM	570
IND	62
AMF	40
CPP	11
CSV	10

Party	Total New Registrations
LPF	8
BPP	7
ASP	6
GRE	5
ECO	5
FFP	4
CPF	2

TABLE 1 - NEW REGISTRATIONS

### Pre-Registration

Florida allows a person who is otherwise qualified to preregister on or after that person's 16th birthday and may vote in any election occurring on or after that person's 18th birthday. See FS 97.041 5(b) for details.

There are **9,438** pre-registered (underage) voters in the county's registrations for this month.

Party	Total Pre-Registrations
AMF	73
ASP	34
BPP	28
CPF	63
CPP	12
CSV	88
DEM	2574
ECO	12
FFP	2
GRE	24
IND	330
LPF	8
NPA	3669
PSL	1
REP	2519
RFM	1
<b>Grand Total</b>	<b>9438</b>

TABLE 2 -PRE-REGISTRATIONS (UNDERAGE)

The full name for each party can be found in in the appendix.

### Registered Seniors

As of this writing there are **2663** voters 100 years old or older in Miami-Dade County.

Age	Total Seniors
100	632
101	477
102	314
103	294
104	188
105	165
106	118
107	81
108	58

Age	Total Seniors
109	60
110	59
111	53
112	36
113	29
114	10
115	24
116	20
117	13
118	7
119	12
120	6
121	3
123	2
124	1
125	1

TABLE 3 - MIAMI-DADE SENIORS (100+)

## Voter Migration

Voters move for a variety of reasons. This month Miami-Dade County experienced **18,241** voters that had their address changed within the system.

**3,474** voters have either moved out or have been removed for Miami-Dade County while **5,667** have moved in. The remainder, **9,100** had a change in either their residential or mailing address which may warrant an inquiry to your Supervisor of Elections to learn more.

## Voter Status Changes

### Voter Activity

A voter changes their status because of “Voter activity” or “Voter inactivity”.

“Active voter” refers to a registered voter whose registration status is active.

“Inactive voter” refers to a registered voter whose registration record has been placed on inactive status after procedures in section 98.065(4)(c), F.S., and Rule 1S-2.041 were followed.

Per Rule 1S-2.041(3)(e) a voter placed on inactive status cannot become active when a third-party address change has been received. An inactive voter can only be restored to active status upon the voter’s own activity as set forth in section 98.065(4)(c), F.S.

**Removal from the rolls.** If an inactive voter does not sign a petition, vote, request a vote-by-mail ballot or update his or her voter registration record by the second federal general election after the date he or she was placed on inactive status, the Supervisor shall remove the name of the inactive voter from the FVRS no later than December 31 in the same year of the second federal general election. Except as provided in subsection (5), no address list maintenance notices can be issued and a voter’s name cannot be removed during the 90-day period immediately preceding an election for federal office.

**3019** voters had their status changed from INACTIVE to ACTIVE.

**4988** voters had their status changed from ACTIVE to INACTIVE.

## Party Affiliation

Voters change parties for a variety of reasons. The following table captures the number of voters who changed their party affiliation and to which party they moved to this month.

Previous Party	New Party	Total
AMF	NPA	1
AMF	REP	1
ASP	IND	1
ASP	NPA	1
BPP	DEM	1
CPF	ASP	1
CPF	CPP	1
CPF	DEM	1
CPF	NPA	2
CPP	BPP	1
CPP	REP	1
CSV	DEM	2
CSV	IND	1
CSV	NPA	5
CSV	REP	6
DEM	AMF	18
DEM	ASP	1
DEM	BPP	6
DEM	CPP	4
DEM	CSV	2
DEM	GRE	1
DEM	IND	81
DEM	LPF	1
DEM	NPA	480
DEM	PSL	3
DEM	REP	332
ECO	AMF	1
ECO	DEM	1
ECO	NPA	2
GRE	DEM	2
GRE	IND	1
GRE	NPA	2
IND	AMF	3
IND	CPP	1
IND	CSV	1
IND	DEM	20
IND	LPF	1
IND	NPA	63
IND	REP	26
LPF	CPP	1
LPF	DEM	1
LPF	IND	1
LPF	NPA	3

Previous Party	New Party	Total
LPF	REP	3
NPA	AMF	42
NPA	ASP	8
NPA	BPP	8
NPA	CPF	1
NPA	CPP	9
NPA	CSV	3
NPA	DEM	340
NPA	ECO	1
NPA	FFP	1
NPA	GRE	3
NPA	IND	94
NPA	LPF	2
NPA	REP	398
REP	AMF	7
REP	ASP	2
REP	DEM	120
REP	IND	48
REP	LPF	2
REP	NPA	222

**TABLE 4 - CHANGES IN PARTY**

The full name for each party can be found in the appendix.

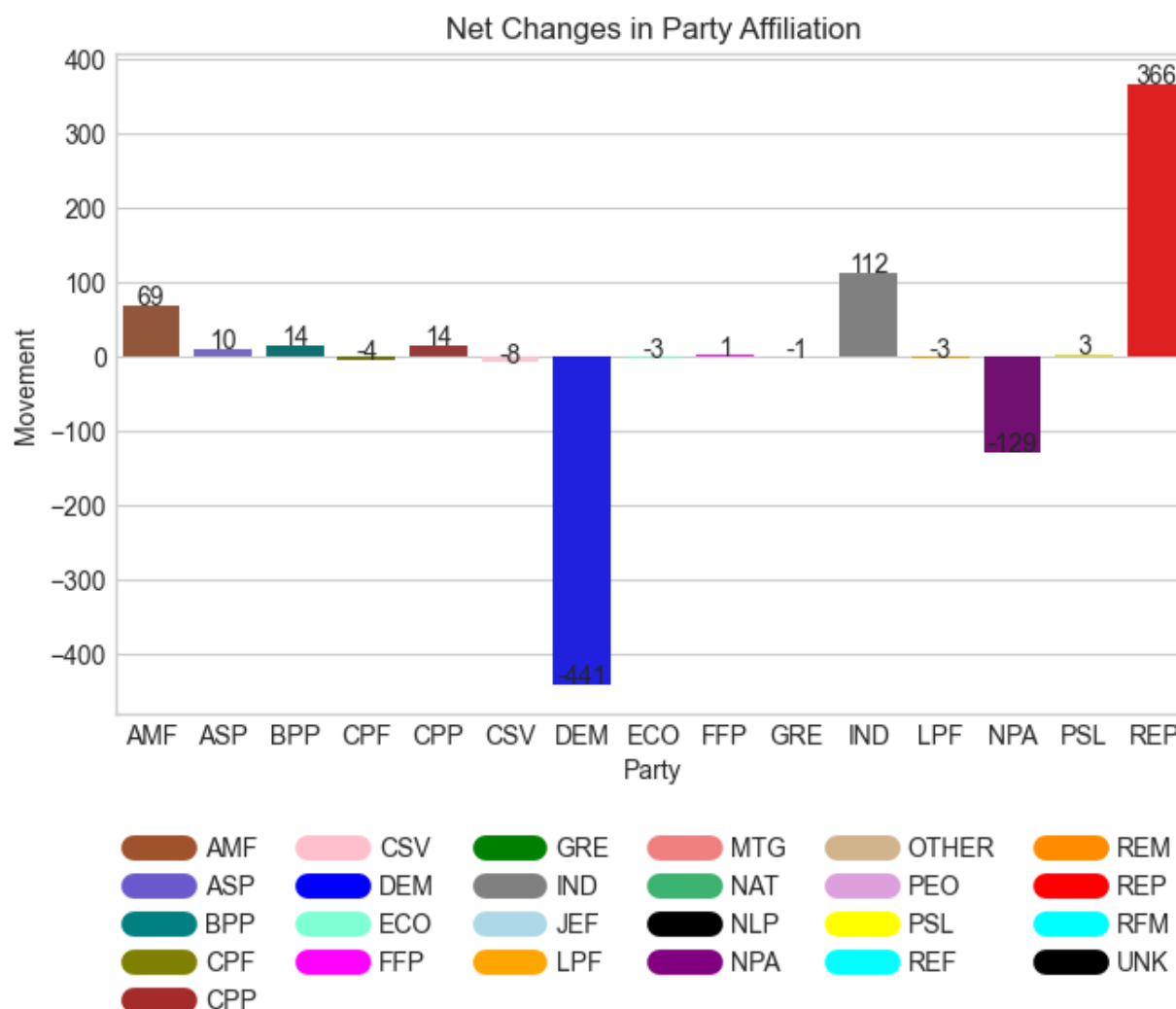


FIGURE 1 - PARTY MOVEMENT

## Anomalies

This section reports on anomalies found in the voter registrations.

### Elector That Appears to Have Voted in an Election Before Being Registered

This query looks for voters who show having voted prior to their date of registration.

This situation should only occur when a voter for some reason becomes ineligible and subsequently gets re-registered. When a voter re-registers they get a new voter ID yet their old voting history stays intact. This then shows up as voting prematurely.

Another possibility is a data entry error or a bug in the election management software.

There were **no** voters where this happened, and this is how they casted their votes:

Voter ID	Registration Date	Election Date	Vote Cast
None	-	-	-

TABLE 5 VOTERS THAT HAVE CAST AT LEAST ONE VOTE PRIOR TO THEIR REGISTRATION DATE

## Voters with a Change in Registration

The rationale for these changes remains uncertain.

Voter ID	Previous Registration Date	New Registration Date
116391185	2012-09-18	2008-07-07
123204732	2016-10-05	2016-01-19
107857782	2011-02-14	2002-07-02
123294402	2016-03-07	2016-03-08
104399640	2020-07-20	2004-03-15
109788552	2019-05-15	1998-10-14
116639776	2010-04-14	2008-09-08
102441429	2012-10-30	2004-08-27
133410399	2024-12-12	2024-12-10
114062479	2020-07-17	2006-01-30
123240025	2016-02-22	2016-02-23
116828688	2008-10-08	2008-09-16
116689527	2008-10-07	2008-09-12
104521827	2011-03-04	2005-02-17
111932912	2018-02-21	2003-07-01
119560176	2016-09-29	2012-03-23
116479334	2008-10-07	2008-07-29
100886235	2016-10-08	2004-08-17
115518726	2008-10-10	2007-10-12
107714709	2021-02-03	2001-12-21
114434083	2012-06-29	2006-06-29
116834197	2018-05-11	2008-09-19
102068450	2015-10-26	2000-05-01
114583183	2012-10-06	2006-08-21
123608533	2020-09-17	2016-06-21
116810895	2008-10-14	2008-10-06
123612354	2018-10-09	2016-06-22
102390580	2012-07-12	2004-04-13
116896158	2008-10-08	2008-10-02
116239038	2008-10-10	2008-05-29
116306873	2012-07-13	2008-06-25
116442475	2008-08-04	2008-07-22
116623020	2008-10-09	2008-09-03
112078113	2014-01-29	2005-08-06
103100475	2012-10-06	2003-12-19
110707757	2019-05-17	2002-11-01
116825737	2008-10-08	2008-09-23
102309040	2020-05-26	2003-06-19
116472528	2012-12-19	2008-07-28
111265816	2016-06-16	2001-11-20
108693926	2019-09-22	2005-11-01

TABLE 6 VOTERS WHO HAD THEIR REGISTRATION DATES CHANGED

## Voters Who Had Their Birth Date Changed

The rationale for these changes remains uncertain.

Voter ID	Previous Birth Date	New Birth Date
129089213	1949-10-02	1949-02-10
130703684	2004-06-06	2004-01-06
110341172	1963-02-13	1962-02-13
109696751	1958-12-18	1957-12-18
109116665	1957-06-06	1957-06-07
120357508	1932-10-11	1932-10-20
133716642	2006-11-07	2006-11-27
115808219	1939-10-04	1939-10-09
110278932	1955-09-14	1955-09-13
109454644	1946-07-24	1946-06-24
132954713	2006-09-21	2006-09-24
133928572	1999-10-17	1999-10-07
133302667	1986-06-11	1996-06-11
128252917	2002-04-20	2002-04-21
109838694	1962-07-09	1962-07-07
109927988	1955-10-19	1952-10-19
109921997	1955-09-02	1951-09-02
109681153	1939-12-11	1938-12-18
110197084	1930-12-09	1932-10-09
110173042	1956-12-02	1956-02-12
109033381	1930-05-28	1929-05-28

TABLE 7 VOTERS WHO HAD THEIR BIRTH DATE CHANGED

## Appendix – Florida Party Affiliations

Party	Full Name
AMF	America First
ASP	American Solidarity Party of Florida
BPP	Boricua Party
CPF	Constitution Party of Florida
CPP	Coalition With A Purpose Party
CSV	Conservative Party of Florida
DEM	Florida Democratic Party
ECO	Ecology Party of Florida
FFP	Florida Forward Party
GRE	Green Party of Florida
IND	Independent Party of Florida
JEF	Jeffersonian Party of Florida
LPF	Libertarian Party of Florida
MTG	MGTOU (Men Going Their Own Way)
NAT	Florida Natural Law Party (Disbanded)
NLP	No Labels Party of Florida (Disbanded)
NPA	No Party Affiliation
PEO	People's Party (Disbanded)
PSL	Party for Socialism and Liberation - Florida
REM	Reform Party
REP	Republican Party of Florida